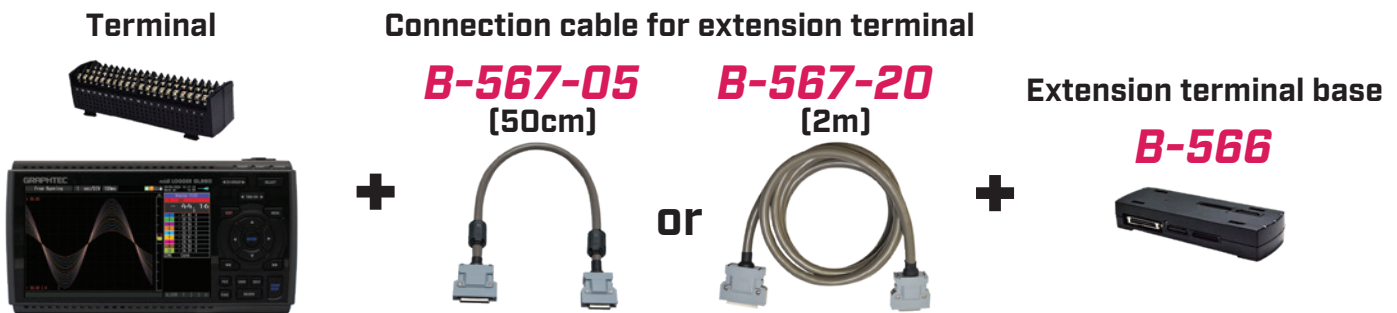
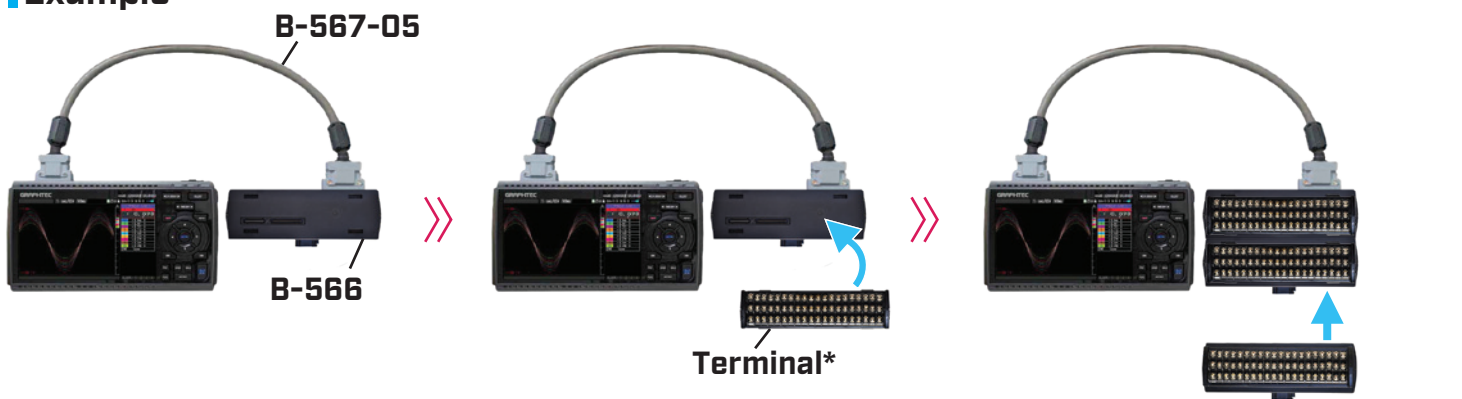


GL860 Optional Items

Channel extension



Example



*Please refer to the next page for Terminals specifications.

Wireless LAN connection

Network connection is available



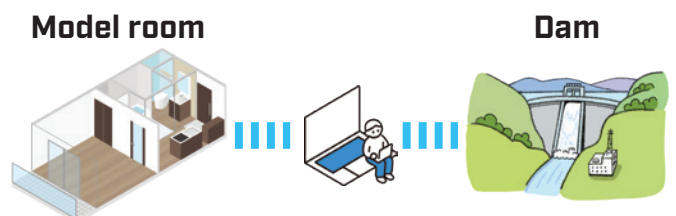
G-REMOTE

Free 30 days trial is now available!

Operate, monitor, save the record remotely

Example

- Model room air conditioning management
- Dam water level monitoring



Specifications

GL860

Please refer to GL860 catalogs for its specifications.

GL860 product brochure

>>>






The detailed catalog

>>>



Terminal

*When using B-565 with other terminals, the lower withstand voltage will be applied.

Item	WITHSTAND HIGH-VOLTAGE HIGH-PRECISION TERMINAL[B-565]	New 30CH SCREW LESS INPUT TERMINAL [B-563SL-30]	New 20CH SCREW INPUT TERMINAL [B-563]	New 20CH SCREW LESS INPUT TERMINAL [B-563SL]
				
Number of CHs	20ch/per terminal	30ch/per terminal	20ch/per terminal	
Measuring	Voltage	20mV-100V		
	Temp.	Thermocouple K · J · E · T · R · S · B · N · C (old: W(WRe5-26)) RTD (*three-wire system only) Pt100 · JPt100 · Pt1000(IEC751)		
	Humidity	0-100% (Optional humidity sensor B-530 is required)		
Max. input voltage	20mV - 2V Range: 60Vp-p (between input terminal and (+) / (-) terminal), 5V -100V range: 110Vp-p (between input terminal and (+) / (-) terminal)		60Vp-p (between input terminal and input terminal)	
	600Vp-p (between input terminal and input terminal)		60Vp-p (between input terminal and GND)	
	300Vp-p (between input terminal and GND)		60Vp-p (between input terminal and GND)	
Volt. measurement accuracy	±(0.05%off.F.S.+10μV)		±0.1%off.F.S.	
Dimensions (approx.)	240x166x52.5mm (exclude protrusion)		240x158x52.5mm (exclude protrusion)	
Weight (approx.)	1035g (without AC adapter & battery)		1010g (without AC adapter & battery)	

*Weight and dimensions are the values including GL860.

Options

Item	Model	Description
GL wireless LAN unit	B-568*	Standard: IEEE802.11b / g / n communication distance: approx. 40m(Depends on the situation)
Base unit for input terminal	B-566	Used for attaching each input terminal
Connection cable for extension terminal (50cm)	B-567-05	Connection cable (50cm)
Connection cable for extension terminal (2m)	B-567-20	Connection cable (2m)

*Available in limited region.

Remote Control Service (G-REMOTE)



The service is offered for limited areas only.
Please contact us for details.

Item	Description
Supported OS(*1)	Windows11/10
Supported WEB browser	Google Chrome (recommended), Microsoft Edge, Firefox (*Internet browser supporting HTML5)
Service content	<Remote control service> Easy remote control and confirmation of measurement data from G-REMOTE on a browser via an Internet connection <Data Storage Service> Storing data on Graphtec cloud servers via Internet connection

Plan	Free trial	Basic	Standard	Premium
Number of monitoring units	1 unit monitoring (*2)	1 unit monitoring (*3)	Max. 5 units monitoring (*3)	Max. 10 units monitoring (*3)
Period of Use	30 days	360 days	360 days	360 days
Storage capacity	1GB	1GB	5GB	10GB

*1 OS that are no longer supported by the OS manufacturer are not supported by Graphtec.

*2 30 days from the first day of login.

*3 360 days after activation.

For more information,
please visit our website! >>>



GRAPHTEC

503-10 Shinano-cho, Totsuka-ku, Yokohama 244-8503, Japan